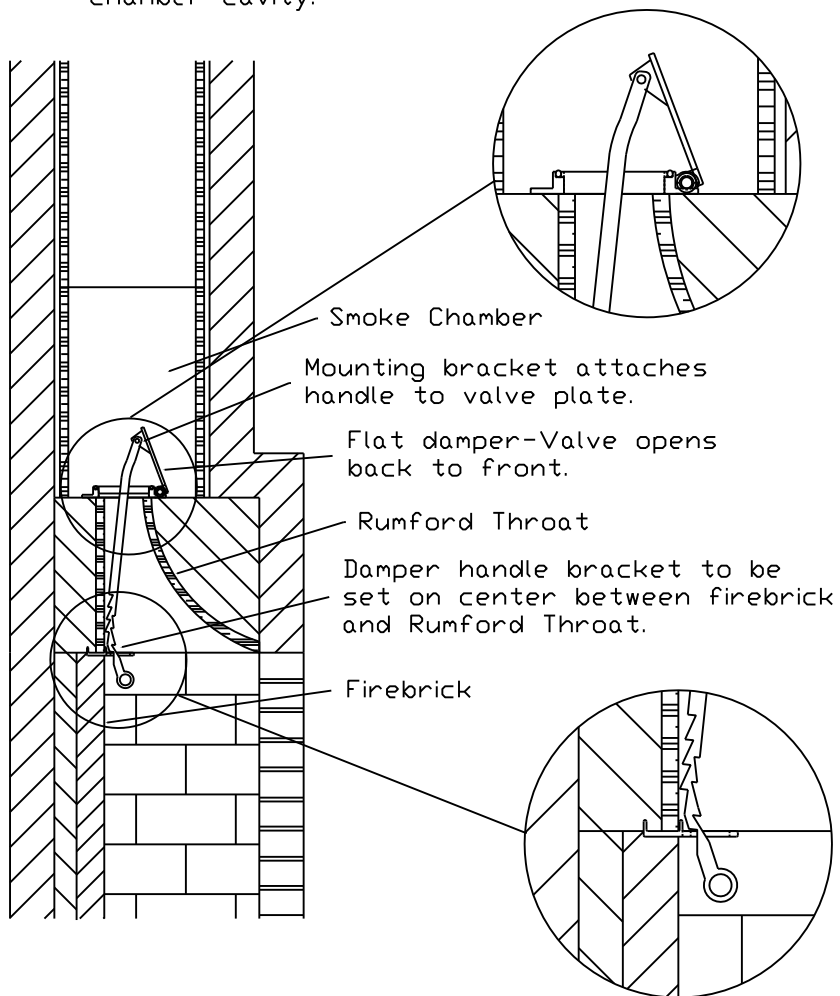


# RUMFORD CAST IRON DAMPER WITH GASKET

## DAMPER INSTALLATION:

1. Center damper handle bracket on the top of the back wall of firebox and set Rumford Throat.
2. Align damper over throat opening of Rumford Throat.
3. Slide handle through damper handle bracket and attach to valve plate.
4. Set smoke chamber.
5. Check damper operation to make sure damper opens freely within the smoke chamber cavity.



See Installation Notes 2, 4, & 5.

See Installation Notes 1, 3, & 5.